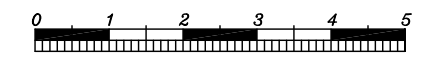


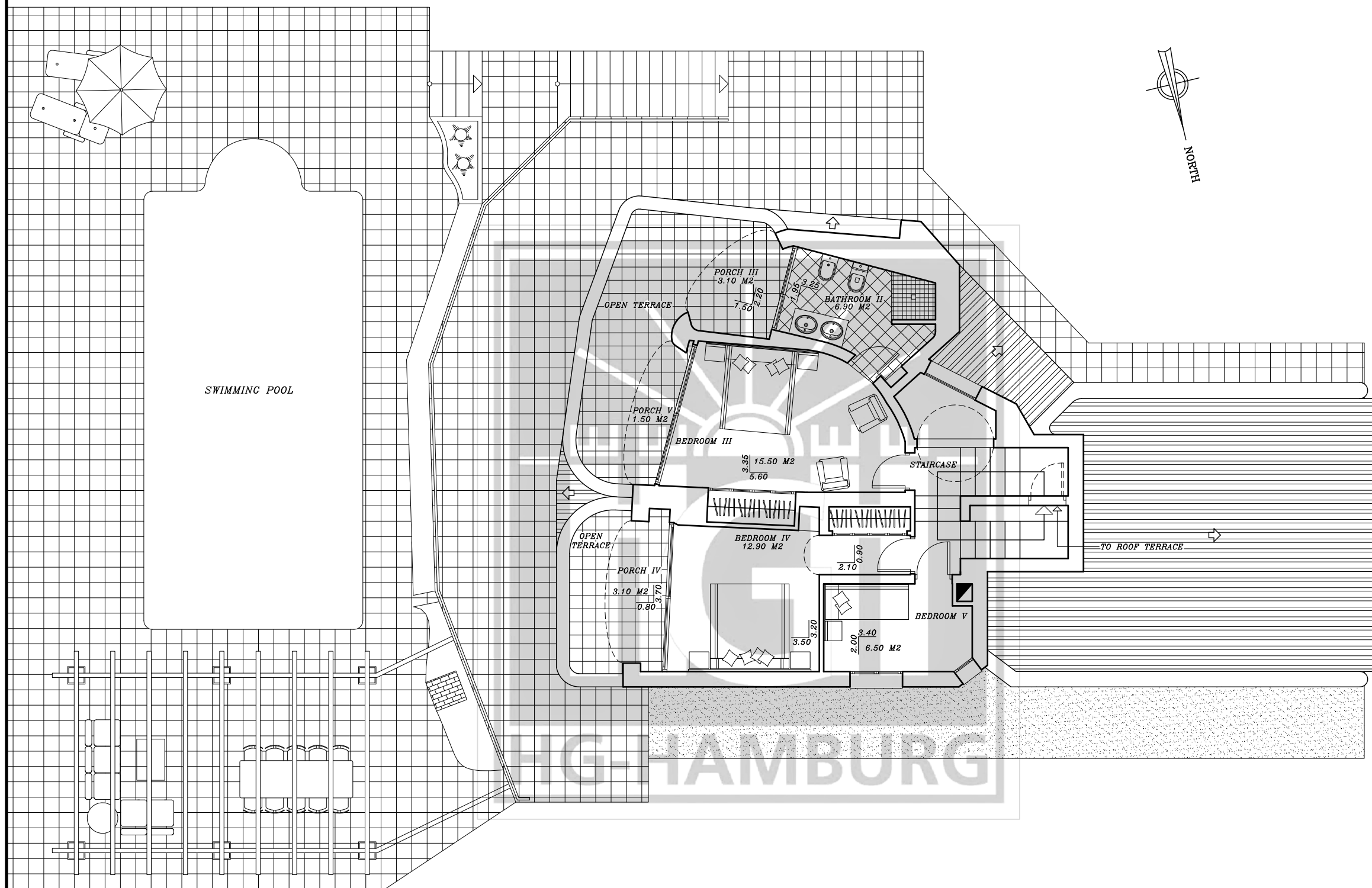
BUILDING PLOT	
BASEMENT	46.00 m ²
GROUND FLOOR	141.10 m ²
UPPER FLOOR	73.60 m ²
PORCH I	19.70 m ²
PORCH II	1.75 m ²
PORCH III	3.60 m ²
PORCH IV	3.90 m ²
PORCH V	2.10 m ²
CAR PARK	22.20 m ²
TOTAL	313.95 m²

INTERNAL SQM GROUND FLOOR	
TOILET	1.50 m ²
BATHROOM I	4.90 m ²
CORRIDOR	3.20 m ²
LIVING ROOM	30.80 m ²
DINING ROOM	13.80 m ²
HALL	5.30 m ²
KITCHEN	9.10 m ²
UTILITY-/ TECHNIQUE ROOM	6.90 m ²
LUMBER ROOM I	2.30 m ²
*BEDROOM I	12.30 m ²
WINTER GARDEN	11.50 m ²
*ADD TO SURFACE BUILT IN WARDROBES	
TOTAL	101.60 m²

GROUND FLOOR

REF 3338



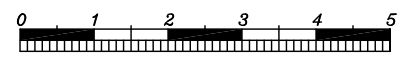


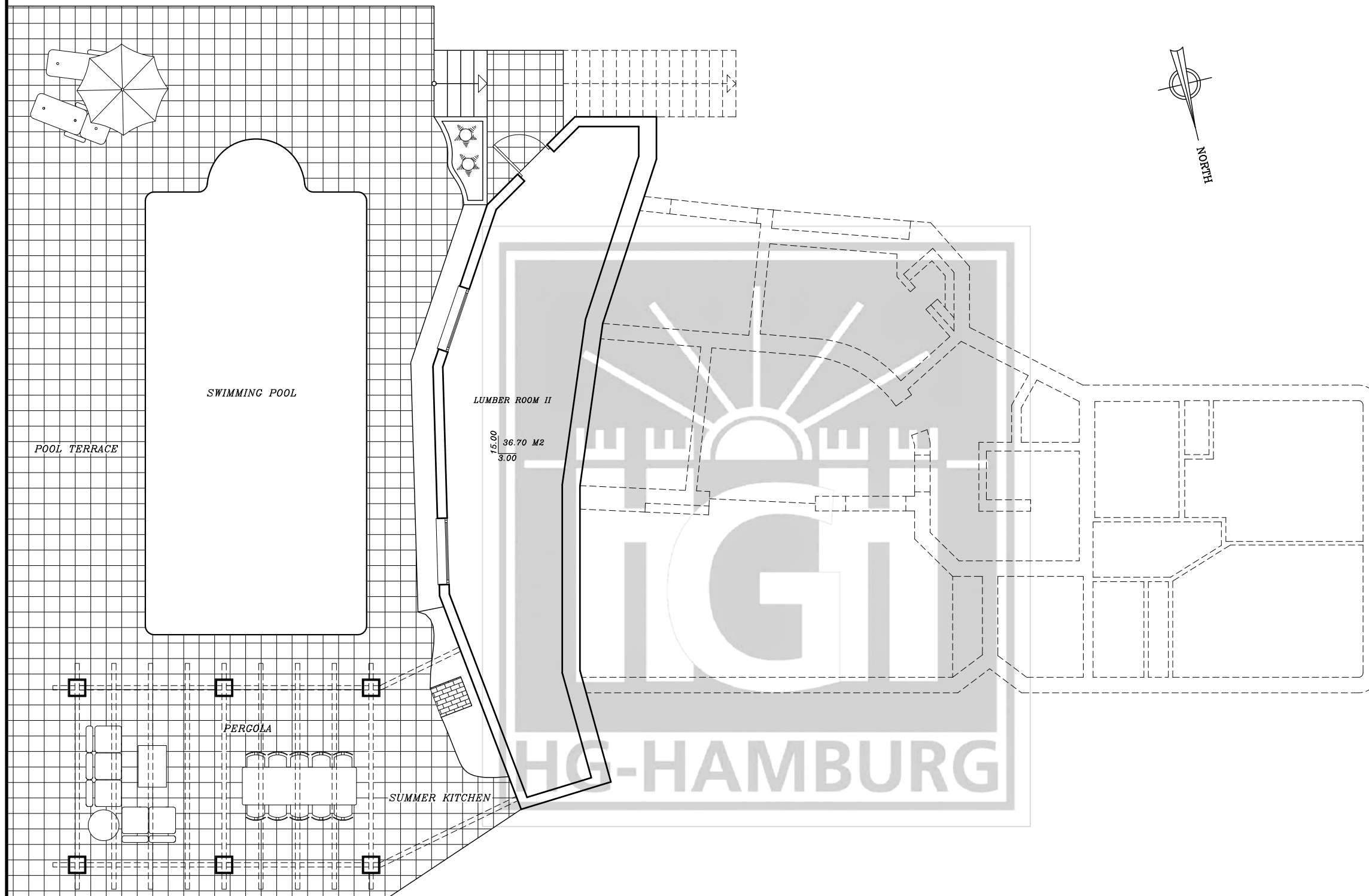
BUILDING PLOT	
BASEMENT	46.00 m ²
GROUND FLOOR	141.10 m ²
UPPER FLOOR	73.60 m ²
PORCH I	19.70 m ²
PORCH II	1.75 m ²
PORCH III	3.60 m ²
PORCH IV	3.90 m ²
PORCH V	2.10 m ²
CAR PARK	22.20 m ²
TOTAL	313.95 m²

INTERNAL SQM UPPER FLOOR	
BATHROOM II	6.90 m ²
*BEDROOM III	15.50 m ²
*BEDROOM IV	12.90 m ²
BEDROOM V	6.50 m ²
*ADD TO SURFACE BUILT IN WARDROBES	
TOTAL	41.80 m²

UPPER FLOOR

REF 3338





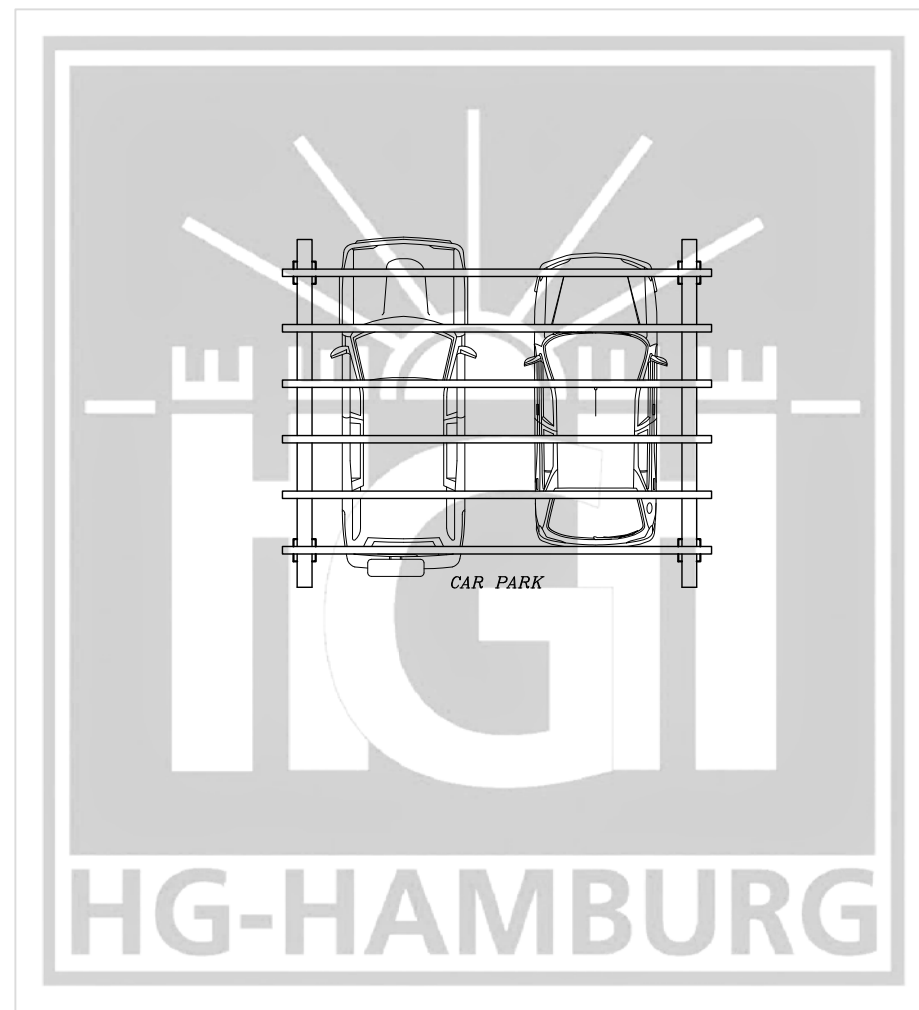
BUILDING PLOT	
BASEMENT	46.00 m ²
GROUND FLOOR	141.10 m ²
UPPER FLOOR	73.60 m ²
PORCH I	19.70 m ²
PORCH II	1.75 m ²
PORCH III	3.60 m ²
PORCH IV	3.90 m ²
PORCH V	2.10 m ²
CAR PARK	22.20 m ²
TOTAL	313.95 m²

INTERNAL SQM BASEMENT	
LUMBER ROOM II	36.70 m ²
TOTAL	36.70 m²

BASEMENT

REF 3338





BUILDING PLOT	
<i>BASEMENT</i>	<i>46.00 m²</i>
<i>GROUND FLOOR</i>	<i>141.10 m²</i>
<i>UPPER FLOOR</i>	<i>73.60 m²</i>
<i>PORCH I</i>	<i>19.70 m²</i>
<i>PORCH II</i>	<i>1.75 m²</i>
<i>PORCH III</i>	<i>3.60 m²</i>
<i>PORCH IV</i>	<i>3.90 m²</i>
<i>PORCH V</i>	<i>2.10 m²</i>
<i>CAR PARK</i>	<i>22.20 m²</i>
TOTAL	313.95 m²

CAR PARK

REF 3338

